



# Digital Multimeter Fuse Replacement

## BEFORE YOU START

1. Obtain the correct replacement fuse kit
  - a. MM100 Replacement Fuse Kit – **Part #: 69193**
  - b. MM200 Replacement Fuse Kit – **Part #: 69194**
  - c. MM1000/1300/2000/2300/6000 F 440mA/1000V Fuse – **Part #: 69192**
  - d. MM1000/1300/2000/2300/6000 F 11A/1000V Fuse – **Part #: 69191**
2. Required Tools
  - a. Small Phillips screwdriver – No. 1 Phillips

## FUSE REPLACEMENT PROCEDURE (MM100 & MM200)

1. Ensure the meter is in the Off position and the unit is face up with the bottom of the unit facing away from you
2. Remove the rubber boot:
  - a. Begin with the bottom of the unit and remove the bottom corners of the orange boot
  - b. Next, remove the lip of the orange boot from the groove on each side of the meter
  - c. Carefully remove the orange boot to prevent tearing as the boot may stick to the meter



(2a)



(2b)



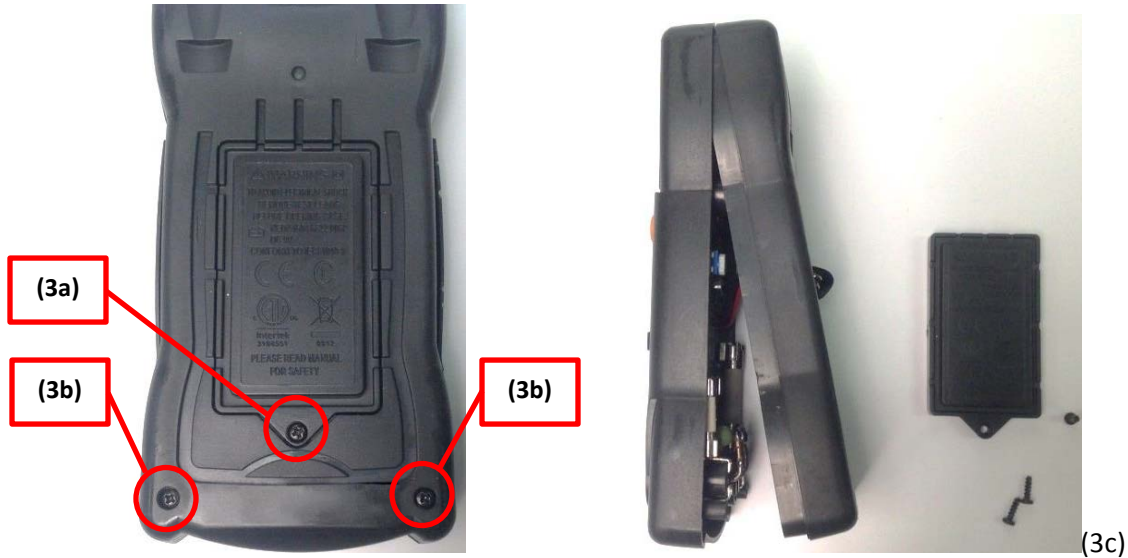
(2c)



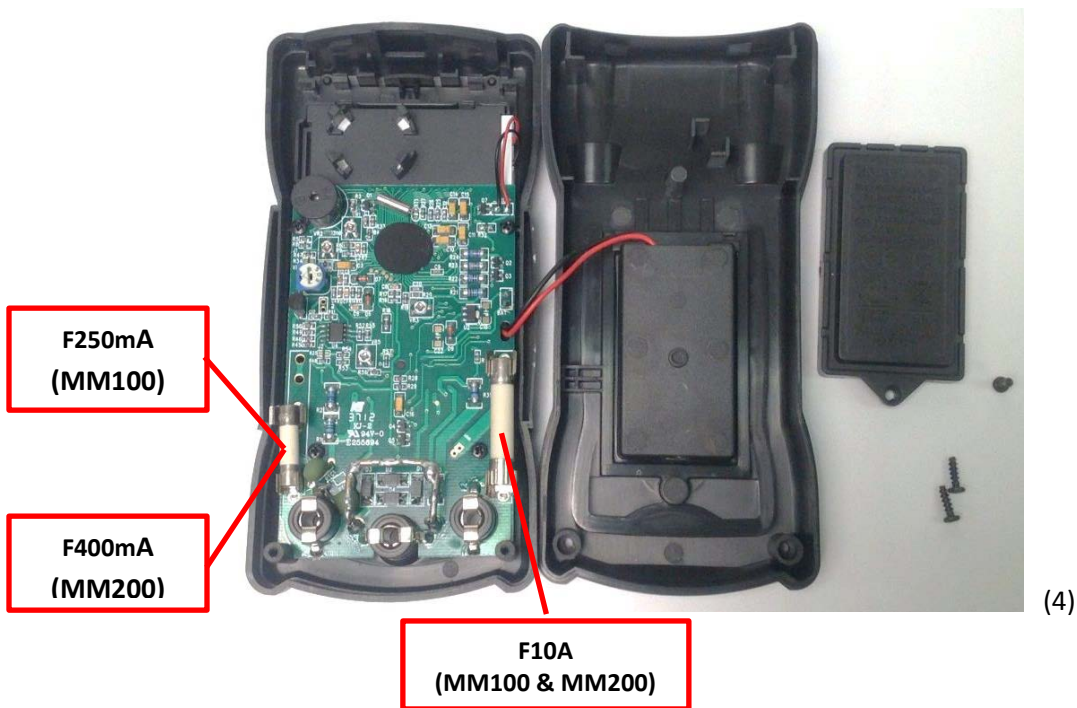
(2c)

# Digital Multimeter Fuse Replacement

3. With the boot completely off:
  - a. Remove the batter cover screw, disconnect and remove the battery
  - b. Remove the two rear case cover screws
  - c. Carefully separate the front and rear cases starting with the bottom of the unit. *Note: the top of the unit is secured with plastic tabs. Use care when sliding the top of the two cases apart*



4. Remove and replace defective fuses



# Digital Multimeter Fuse Replacement

## FUSE REPLACEMENT PROCEDURE (MM1000/MM1300/MM2000/MM2300/MM6000)

1. Ensure the meter is in the Off position.
  - a. Place the unit face down with the bottom of the unit facing away from you
  - b. Extend the meter kickstand



(1a)



(1b)

2. To remove the rubber boot:
  - a. Place your thumbs on the back of the unit with your fingers firmly on the boot corners.
  - b. While pulling back on the corners, press your thumbs against the unit, and continue until the boot is completely removed.



(2a)



(2b)

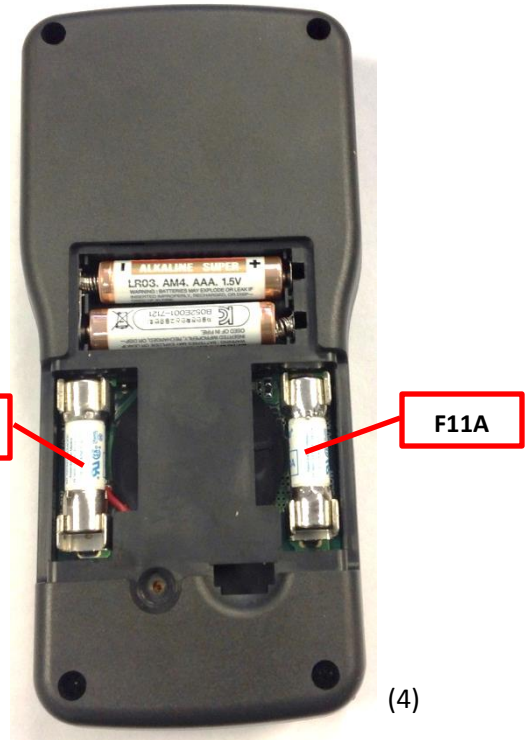


# Digital Multimeter Fuse Replacement

- 3. Remove battery/fuse cover screw and battery door.
- 4. Remove and replace defective fuse.



(3)



(4)

### KLEIN TOOLS METER SUPPORT

Please contact Klein Tools Meter Support with any question at 1-877-775-5346.