

# Flashlights & Accessories

Klein Tools offers flashlights and flashlight accessories for a variety of work environments. Klein flashlights feature advanced technology LEDs that provide superior light and are made of nearly indestructible polymers for years of service.

F O R P R O F E S S I O N A L S . . . S I N C E 1 8 5 7 ®



Flashlights & Accessories



## Flashlights

### LED Clip-On Flashlight

- Dual super bright, powerful 5 mm Nichia white LED lights with 10,000 hours of lamp life.
- 6-lumen tested light-output generates a strong beam.
- 100 hours of battery life so you won't be left in the dark.
- Light turns on when swivel head is flipped up.
- Head pivots to a full 180° for light where you need it.
- Body made of virtually indestructible Xylex™.
- Multiple use built-in clip attaches to surfaces up to 1/2" thick.



X11

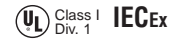


Cat. No.	Batteries Included	Overall Length	Weight (oz.)†
X11	2 CR2032 3V Lithium	3.5" (8.9 cm)	1.0

### LED Mini-Pocket Flashlight



X5



- Bright, powerful 5 mm Nichia white LED light with 50,000 hours of lamp life.
- 9-lumen tested light-output generates a strong concentrated beam.
- 130 hours of battery life so you won't be left in the dark.
- Push-button on/off switch provides constant or momentary modes.
- Durable polycarbonate body with O-ring sealed Xenoy® shroud.
- Includes a breakaway lanyard and pocket clip for easy attachment.
- Interchangeable clear, red and green colored lens discs for multiple applications.

Cat. No.	Batteries Included	Overall Length	Weight (oz.)†
X5	4 LR44 Alkaline	2.64" (6.7 cm)	.9

### Recoil™ LED Grip-It™ Flashlight

- Bright, powerful 1 watt Luxeon™ Lambertion LED utilizes Recoil LED Technology™ and provides 10,000 hours of lamp life.
- 32-lumen tested light-output produces a bright LED beam.
- Recoil LED Technology™ focuses 100% of the light forward to produce a white collimated beam that's as bright as an incandescent light.
- 32 hours of battery life so you won't be left in the dark.
- One-hand safety on/off switch operation.
- Rugged ABS body with durable polycarbonate lens, O-ring sealed shroud.
- Wrist lanyard secures and suspends flashlight in close proximity.
- Submersible to 500 feet.



X19



Cat. No.	Batteries Included	Overall Length	Weight (oz.)†
X19	4 AA Alkaline	7" (17.8 cm)	7.3

†Weight includes batteries.

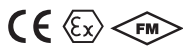
**▲WARNING:** It is important that users of these products read, understand, and follow all instructions, cautions, and warnings that are attached to and/or packed with the product.

## Recoil™ LED Grip-It™ 90° Flashlight

- Bright, powerful 1 watt Luxeon™ Lambertion LED utilizes Recoil LED Technology™ and provides 10,000 hours of lamp life.
- 32-lumen tested light-output produces a bright LED beam.
- Recoil LED Technology™ focuses 100% of the light forward to produce a white collimated beam that's as bright as an incandescent light.
- One-hand safety on/off switch operation.
- Rugged ABS body with durable polycarbonate lens, O-ring sealed shroud.
- 90° right-angle head design.
- Stainless steel clip and ring enable hands-free operation.
- Wrist lanyard secures and suspends flashlight in close proximity.



X21



Cat. No.	Batteries Included	Overall Length	Weight (oz.)†
X21	4 AA Alkaline	7.51" (19.1 cm)	10.5

## Recoil™ LED Heavy Duty Flashlight

- Bright, powerful 1 watt Luxeon™ Lambertion LED utilizes Recoil LED Technology™ and provides 10,000 hours of lamp life.
- 32-lumen tested light-output produces a bright LED beam.
- Recoil LED Technology™ focuses 100% of the light forward to produce a white collimated beam that's as bright as an incandescent light.
- 50 hours of battery life so you won't be left in the dark.
- Twist on/off activation prevents accidental switch activation.
- Rugged ABS body with durable polycarbonate lens, O-ring sealed shroud.
- Submersible to 500 feet.
- Wrist lanyard secures and suspends flashlight in close proximity.
- Spring loaded belt clip securely attaches to belts up to 2".
- Batteries NOT included.



X35



Cat. No.	Batteries	Overall Length	Weight (oz.)
X35	3 C Alkaline	8.11" (20.6 cm)	5.9

## Xenon NiMH Rechargeable Spotlight

- Heavy-duty design with dual lamp modules and a rechargeable battery system in a durable enclosure that is lightest in class at 3.8 pounds.
- Primary Xenon lamp module produces a bright, powerful white beam.
- Back-up Xenon lamp module.
- 600-lumen tested light-output generates a strong beam.
- 1,000 cycle rechargeable NiMH battery provides operating range from 1.5 hours (primary) to 2.5 hours (back-up) and 4 hours (low).
- NiMH battery-pack completely recharges in 3 to 3.5 hours.
- Rugged ABS body with nylon lens.
- X44 lays flat or stands upright and the head pivots almost 180°.
- Dual mode operation: constant on and emergency strobe.
- LED indicates when power button is on even when batteries are low.
- Quick release, one hand removal from the charger base is ideal for grab 'n' go situations.
- Quick connect charger base mounts anywhere - on a wall or in a vehicle - and it includes drilling mounts.
- Quick disconnect heavy-duty strap fits comfortably on your shoulder.
- Includes 12V plug-in adapter for direct wiring for in-vehicle charging and/or installation.
- Optional 12V mobile adapter (Cat. No. 56016) keeps the X44 ready to perform.
- Replacement Xenon bulb available (Cat. No. 56017).



X44



Cat. No.	Batteries Included	Overall Length	Weight (lbs.)†
X44	6 D NiMH	9.5" (24.1 cm)	3.8

†Weight includes batteries.

**▲WARNING:** It is important that users of these products read, understand, and follow all instructions, cautions, and warnings that are attached to and/or packed with the product.





## Lighting System

### Klein-Bright™ Remote Area Lighting System (RALs)

- 16 bright, powerful 1-Watt Luxeon™ LEDs mounted in an aluminum heat sink.
- On the high setting, 1,280-lumen tested light-output produces near-daylight brightness on a work site, (100-lumen tested light-output on low setting).
- 9 hours of life at maximum output tailing off to low light level at hour 17.
- Light diffuser can be mounted to change the beam from a focused spot to a diffused beam.
- Retractable aluminum pole extends to a height of 83", assembles in minutes and stores inside the case.
- 12-volt rechargeable sealed lead acid (IATA approved) battery (6-hour recharge time).
- Auxiliary socket provides power to any 12-volt device.
- Waterproof, crushproof, and dust-proof polypropylene co-polymer case is resistant to chemicals, water and corrosion.
- Retractable extension handle.
- Strong polyurethane wheels with stainless steel bearings.
- Easy open double throw latches and comfortable rubber over-molded top and side handles.
- O-ring seal and automatic pressure equalization valve.
- Stainless steel hardware and padlock protectors.

Cat. No.	Batteries Included	Dimensions	Weight (lbs.)†
X79	1 Sealed Lead Acid	Case: 22" L x 13.8" W x 9" D (56 cm H x 35 cm W x 23 cm D) Light extends: 83" (211 cm) H	54



X79

## Flashlight Accessories

### Cordura® Ballistic Nylon Flashlight Holder

- Cordura® ballistic nylon for exceptional resistance to abrasions, punctures and tears.
- Metal belt clip attaches to belts up to 2" wide.
- Secure snap closure.



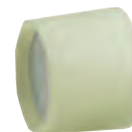
1106

Cat. No.	Applicable Model	Dimensions H x W x D	Weight (oz.)
1106	X35	9" x 2.75" x 1.88" (22.9 cm x 6.99 cm x 4.78 cm)	3.4

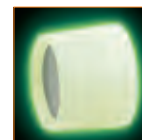
Recoil™ and Recoil LED Technology™ are trademarks of Pelican Products, Inc.  
Luxeon™ is trademark of the Philips Lumileds™ Lighting Company.  
XENOY® is a registered trademark of the General Electric Company.  
XYLEX™ is a trademark of the General Electric Company.  
Cordura® is a registered trademark of INVISTA for durable fabrics.

### E-Z-See™ Photo Luminescent Shrouds

- Designed for use with X19, X21 (1100) and X35 (1101) Klein® Flashlights.
- New generation photo-luminescent material in the plastic absorbs the energy from any light source - fluorescent lights, the sun, or even the flashlight's own beam.
- Lens ring emits a bright glow in the dark.
- No more fumbling in the dark for your flashlight.



1100



Cat. No.	Applicable Model	Length	Weight (oz.)
1100	X19 & X21	1.625" (4.13 cm) H	1.0
1101	X35	1.9375" (4.92 cm) H	1.0

†Weight includes batteries.

**▲WARNING:** It is important that users of these products read, understand, and follow all instructions, cautions, and warnings that are attached to and/or packed with the product.